

EXPLODED VIEW

NOTE FOR MATERIALS:
 *-With controlled impurities (Co, Ta, Nb) according to REYV5V
 **-With controlled impurities (Co, Ta, Nb) according to REYV5V, if feasible

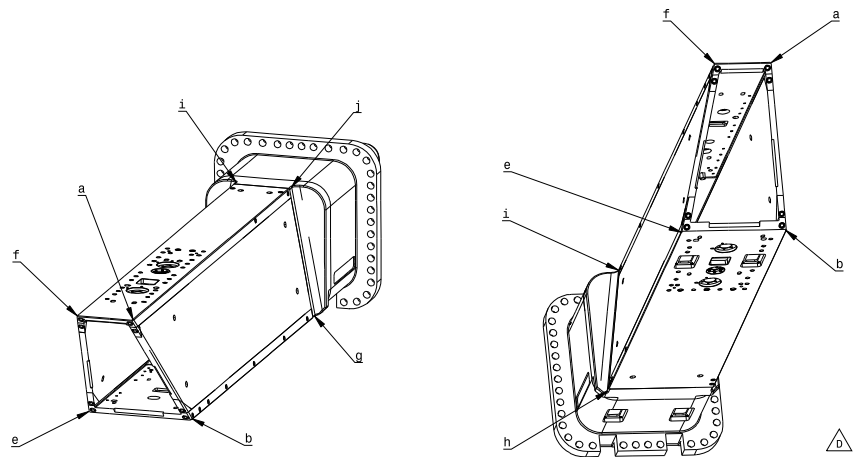
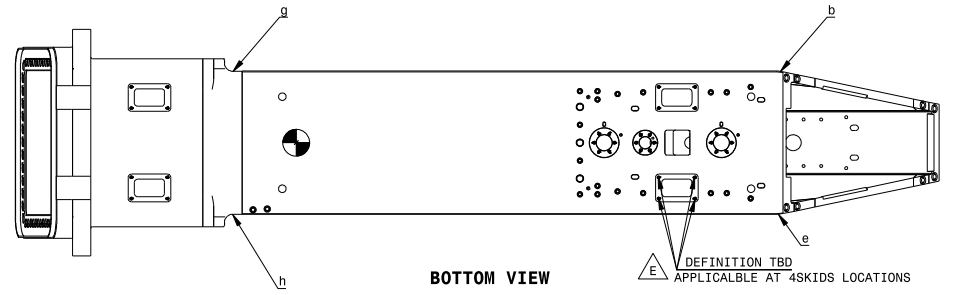
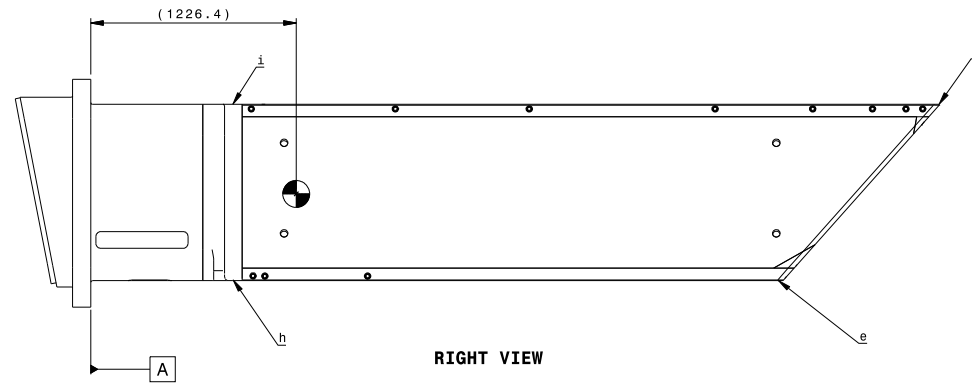
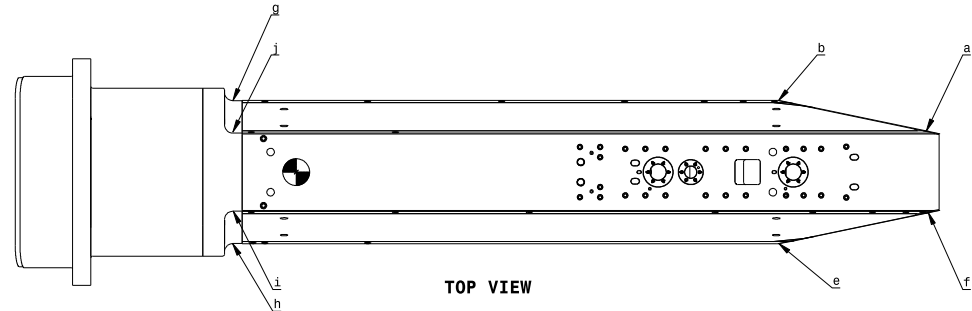
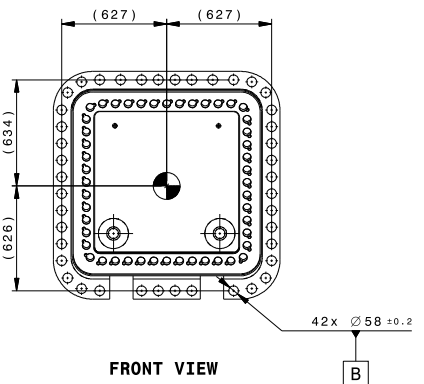
ITEM	PART NAME	PRODUCT TYPE	MATERIAL	QUANTITY	MASS (Kg)
1	UPP VV MOUNTING FLANGE	Forging	X2CrNiMo17-12-2 ITER GRADE	1	3392
2	INSERT M5X50	Optional Component	CuAl10Ni5Fe4 CW307G R740	48	-
3	CLAMPING PIN ISO 8752 18X50	Optional Component	CuAl10Ni5Fe4 CW307G R740	48	-
4	TRAPEZOIDE COOLING PIPE	Pipe	X2CrNiMo17-12-2 [1.4404*]	1	5
5	UPP TRAP STRUCT END PLATE	Plate	X2CrNiMo17-12-2 ITER GRADE	1	553
6	UPP TRAPEZ STR SIDE RIGHT PLATE	Plate	X2CrNiMo17-12-2 ITER GRADE	1	1439
7	UPP TRAPEZ STR SIDE LEFT PLATE	Plate	X2CrNiMo17-12-2 ITER GRADE	1	1441
8	UPP TRAPEZ STR UPP TOP PLATE	Forging	X2CrNiMo17-12-2 ITER GRADE	1	892
9	UPP TRAPEZ STR BOTTOM PLATE	Forging	X2CrNiMo17-12-2 ITER GRADE	1	1226
10	FRONT COVER TOP RIGHT	Plate	X2CrNiMo17-12-2 ITER GRADE	1	1.3
11	FRONT COVER TOP LEFT	Plate	X2CrNiMo17-12-2 ITER GRADE	1	1.3
12	FRONT COVER BOTTOM RIGHT	Plate	X2CrNiMo17-12-2 ITER GRADE	1	3
13	FRONT COVER BOTTOM LEFT	Plate	X2CrNiMo17-12-2 ITER GRADE	1	3
14	STANDARD FRONT PLUG	cross-forged material	X2CrNiMo17-12-2 ITER GRADE	8	0.48
15	STANDARD PLUG	cross-forged material	X2CrNiMo17-12-2 ITER GRADE	20	0.58
16	OBLONG PLUG	cross-forged material	X2CrNiMo17-12-2 ITER GRADE	4	0.2
17	INSERT M10x15	Standard Component	CuAl10Ni5Fe4 CW307G R740	36	-
18	CLAMPING PIN ISO 8752 6X14	Standard Component	CuAl10Ni5Fe4 CW307G R740	36	-
19	FLOW REDUCER DIA.12.4X12	cross-forged material	X2CrNiMo17-12-2 ITER GRADE	8	0.009
20	CHANNEL PLUG DIA. 28	cross-forged material	X2CrNiMo17-12-2 ITER GRADE	2	0.047
21	STANDARD PLUG 15MM THK	cross-forged material	X2CrNiMo17-12-2 ITER GRADE	24	0.96

TOTAL MASS: 9011.5 kg

DESIGN NO	WSFAL6	APPROVED BY	ZEM	LEGAL OWNER
DESIGNED BY	RUOLZY	DESIGNED BY	RUOLZY	
CHECKED BY	RUOLZY	CHECKED BY	GUZRAJ	
DESIGN TITLE	Diagnosics Up Port Systems Generic (UPPS)	DRAWN BY	KALWALS	DOCUMENT TITLE
DATE OF ISSUE	29 Aug 22	DATE OF REVISION	MD	UPPER_PORT_PLUG_STRUCTURE
ISSUE NO	1	ISSUE NO	1	EXPLODED VIEW
SCALE	W 1:15	SCALE	D	QUALITY CLASS
THIRD ANGLE PROJECTION		DOCUMENT TYPE	Part Drawing	ITER
		ITER PART NUMBER	A155U0AP04495001	REVISION
		DATE	07	STATUS
			--G	

Space reservation for the banner

Space reservation for the banner



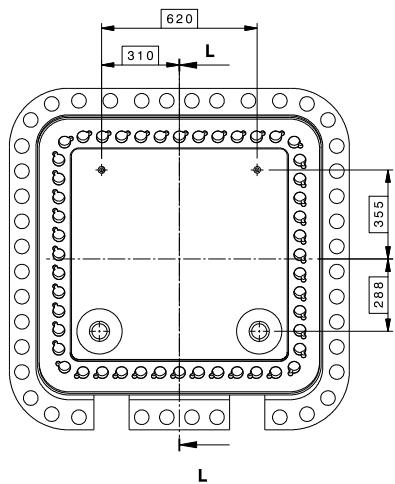
NOTES:

Δ Datum **A** is the interface plane between the PPS and VV Upper port shell extension

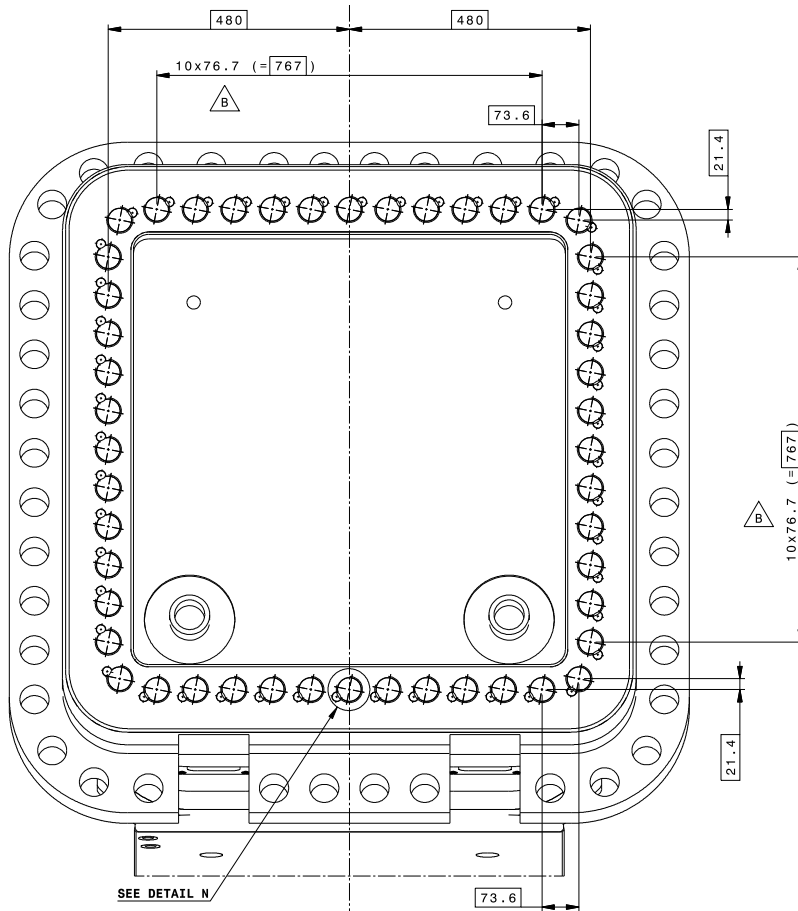
\square Datum **B** is defined by the sum of the least squares of the 42 holes of the plug interface. This is defining 2 middle plans

Roughness unless specified Ra 6.3

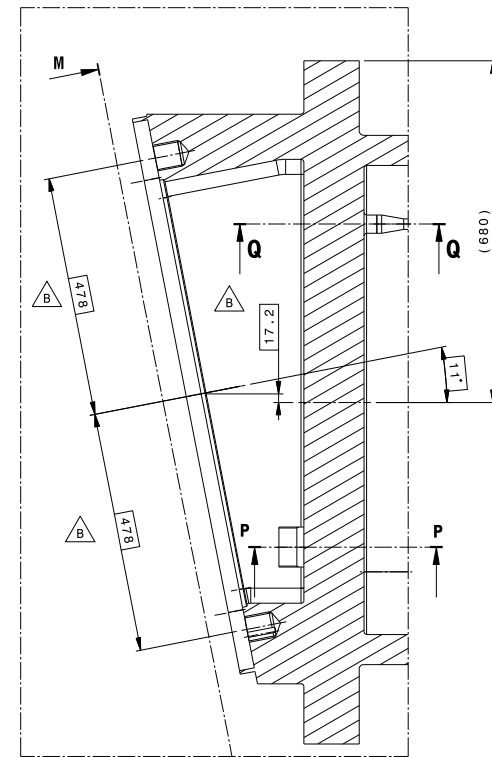
FORM NO	WSFAL6	APPROVED BY	WALSHM	LEGAL OWNER	
DESIGNED BY	RUOLZY	REVISION NO	GURRAOJ		
CHECKED BY	RUOLZY	DRAWN BY	KALWALS	PART TITLE	
PART TITLE		SMART CLASS		UPPER_PORT_PLUG_STRUCTURE	
Diagnosics Up Port Systems Generic Views		SIC-1		DATUM SYSTEM	
DATE OF ISSUE	29 Aug 22	BY PROJECT	MD	QUALITY CLASS	GC-1
NO. OF PAGES	1	NO. OF SHEETS	1	DOCUMENT TYPE	Part Drawing
THIRD ANGLE PROJECTION	W	SCALE	1:15	PROJECT FILE NUMBER	A155U0AP0449500207--G



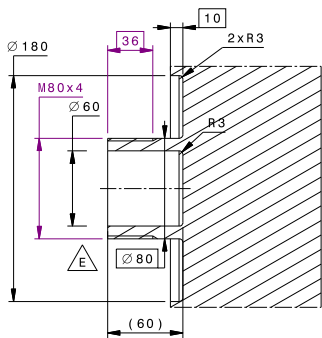
FRONT VIEW
Scale: 1:10



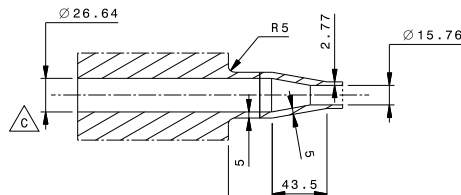
SECTION VIEW M-M



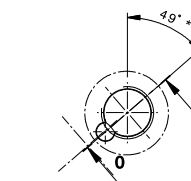
SECTION VIEW L-L



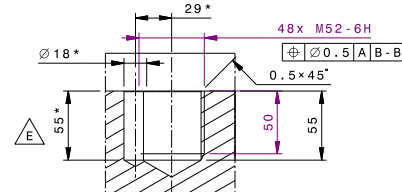
SECTION VIEW P-P
Scale: 1:2



SECTION VIEW Q-Q
Scale: 1:2




DETAIL N
Scale: 2:5

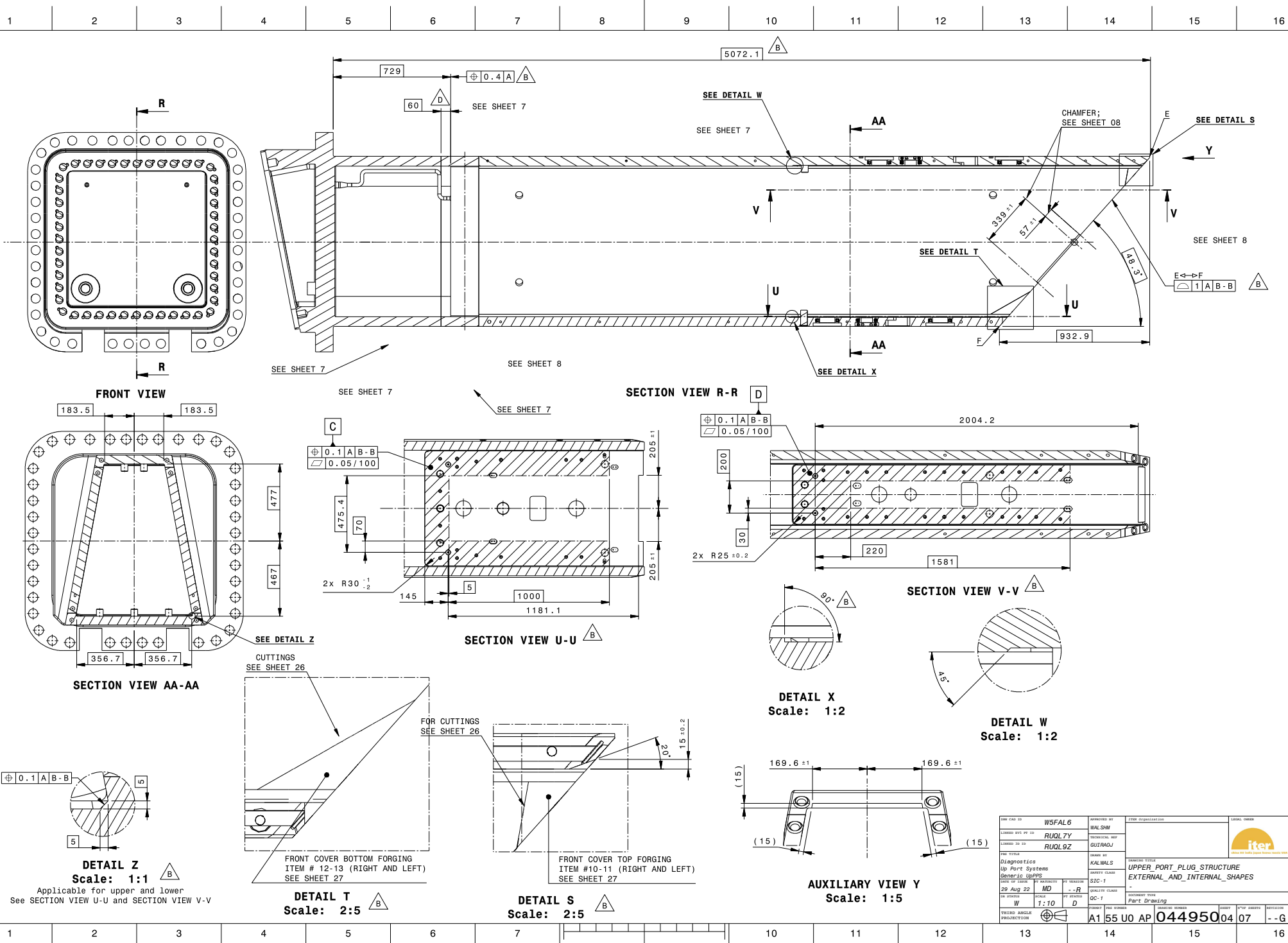


SECTION VIEW O-O
Scale: 1:2

Note :
* Drilling tolerance and position to be adjusted with insert type used.

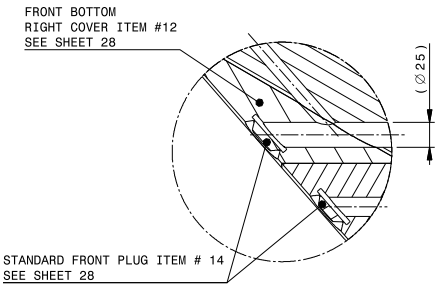
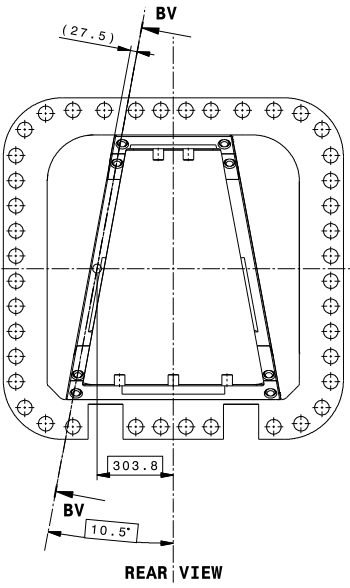
FORM NO: WSFAL6	APPROVED BY: WAL SHM	FORM NO: 044950	LEGAL OWNER:
DESIGNED BY: RUQLZY	REVISION NO: 01		
CHECKED BY: RUQLSZ	DATE: 29 Aug 22		
TITLE: Diagnostics Up Port Systems Generic (UPPS)		DRAWN BY: KALWALS DRAWN DATE: 29 Aug 22 CHECKED BY: MD CHECKED DATE: 29 Aug 22 SCALE: 1:5 PART: D	
PROJECT: 155U0AP		DRAWING NO: 044950	
THIRD ANGLE PROJECTION		SHEET: 03 OF 07	

Space reservation for the banner

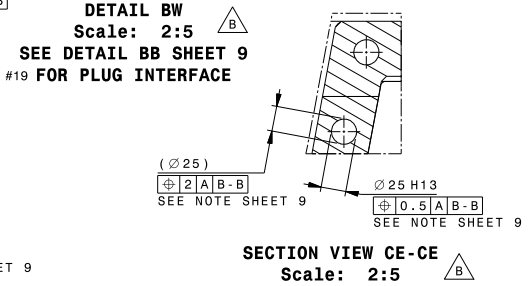
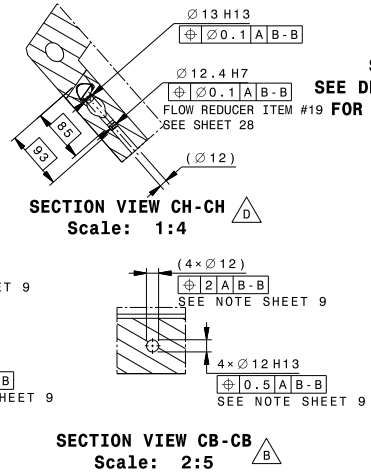
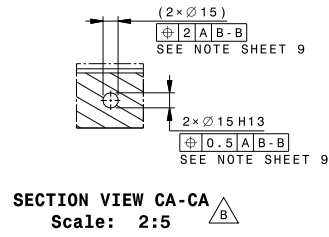
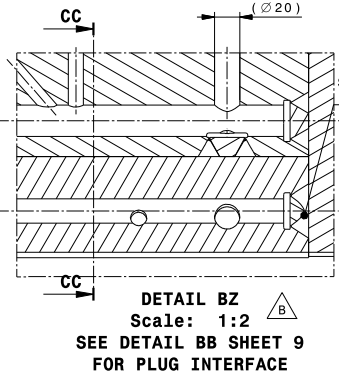
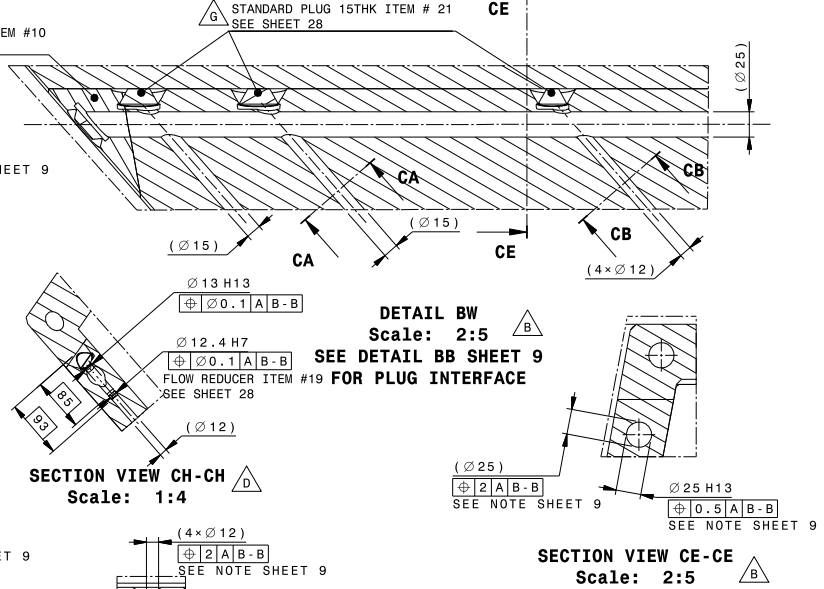
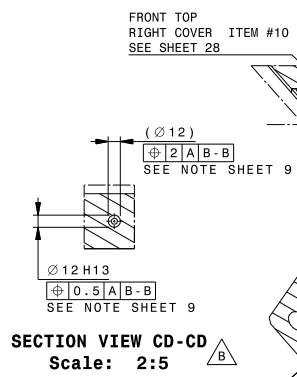
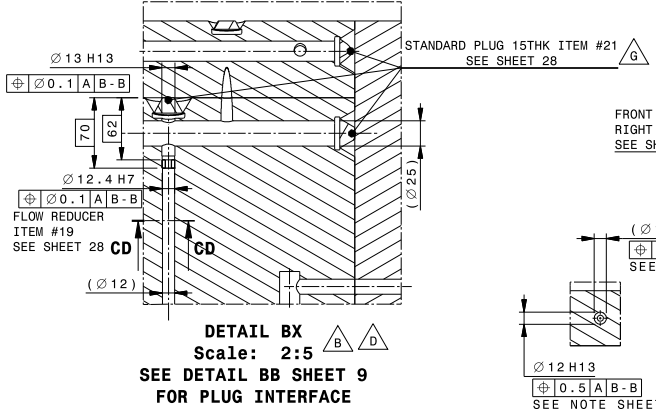
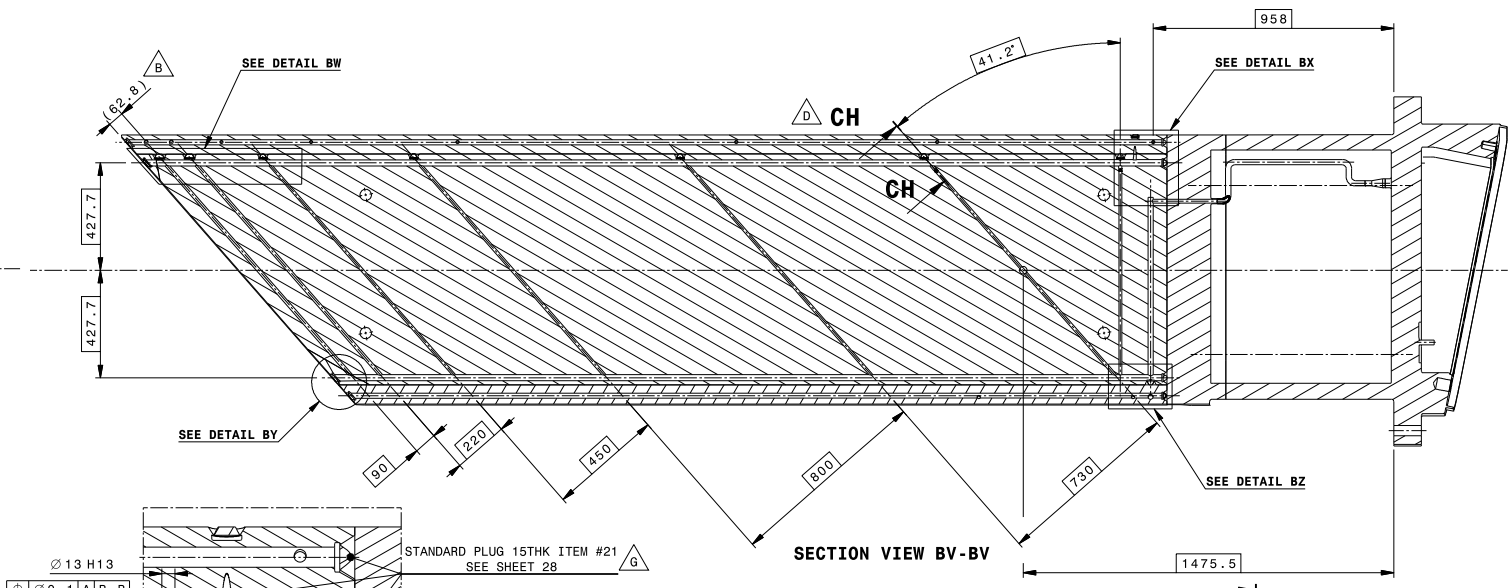
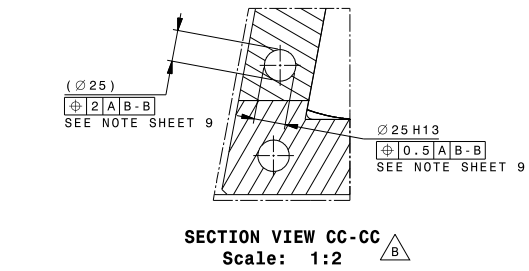


FORM NO. 10	WSFAL6	APPROVED BY	TECHNICAL	LEGAL OWNER
DESIGNED BY	RUQLZY	DRAWN BY		
CHECKED BY	RUQLSZ	DATE		
TITLE Diagnostics Up Port Systems Generic (UPSS)		DRAWN BY KALWALS	PART NUMBER UPPER_PORT_PLUG_STRUCTURE EXTERNAL_AND_INTERNAL_SHAPES	
DATE OF ISSUE	29 Aug 22	REV	MD	QC-1
QUANTITY	W	SCALE	1:10	D
THIRD ANGLE PROJECTION		DOCUMENT TYPE	Part Drawing	
PROJECT / PART NUMBER A1 55 U0 AP 04495004 07			SHEET / TOTAL SHEETS -- / G	

Space reservation for the banner

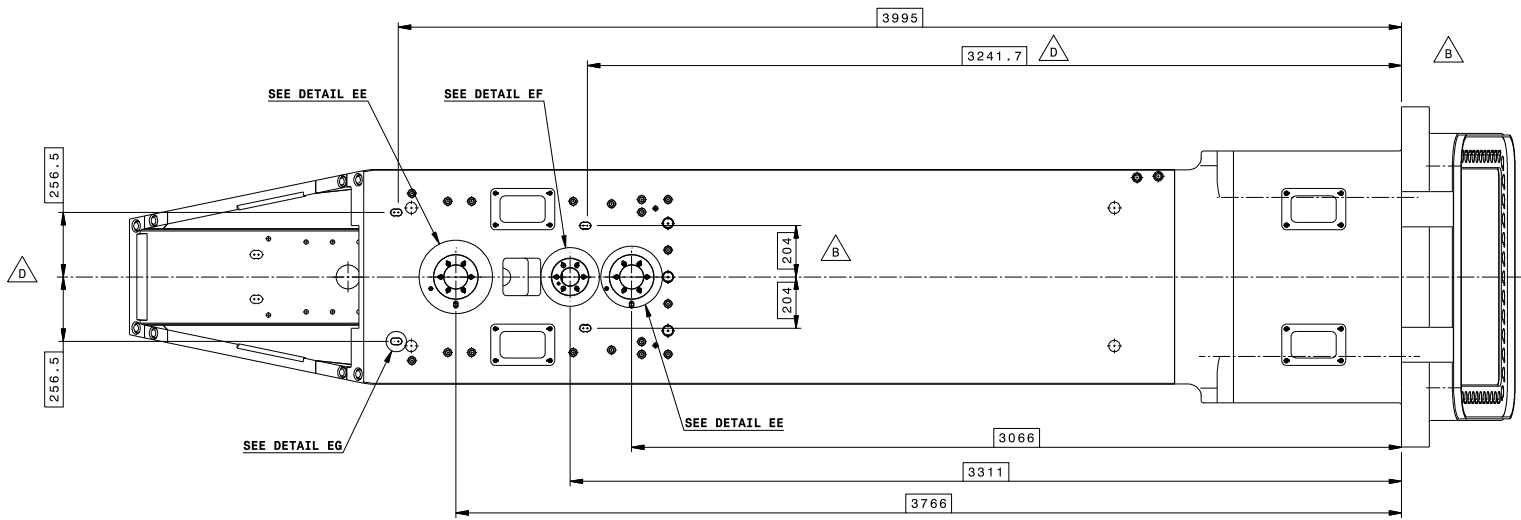


DETAIL BY
Scale: 2:5
SEE DETAIL BB SHEET 9
FOR PLUG INTERFACE
SEE DETAIL BA SHEET 9
FOR FRONT PLUG INTERFACE

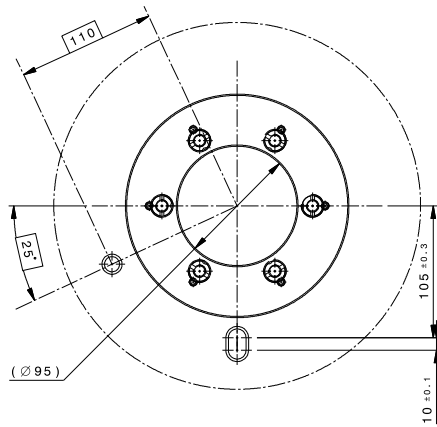


FORM NO. 10	WSFAL6	APPROVED BY	KALWALS	DATE	29 Aug 22
DESIGNED BY	RULQZY	REVISION NO.	01	DATE	29 Aug 22
CHECKED BY	RULQZY	QUALITY CLASS	QC-1	SCALE	1:10
TITLE		UPPER PORT PLUG STRUCTURE		DRAWN BY	
Diagnosics		INTERNAL DRILLINGS		CHECKED BY	
Up Port Systems		RIGHT SIDE PLATE		DATE	
Generic Issues		Part Drawing		SCALE	
DATE OF ISSUE		29 Aug 22		SCALE	
BY PROJECT		MD		SCALE	
BY OFFICE		W		SCALE	
BY DRAWER		D		SCALE	
BY CHECKER		D		SCALE	
BY APPROVER		D		SCALE	
BY PRODUCER		D		SCALE	
THIRD ANGLE PROJECTION					
A1 55 U0 AP 044950 05 07 --G					

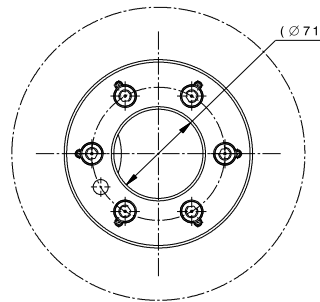
Space reservation for the banner



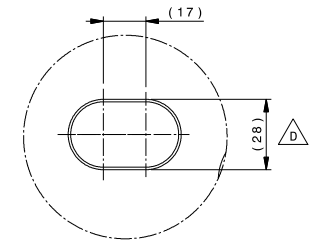
BOTTOM VIEW



DETAIL EE
Scale: 1:2
APPLICABLE 2x
SEE SHEET 21 DETAIL DP
ROTATED BY 180°
FOR MISSING DIMENSIONS



DETAIL EF
Scale: 1:2
SEE SHEET 22 DETAIL DT
ROTATED BY 180°
FOR MISSING DIMENSIONS



DETAIL EG
Scale: 1:1
SEE SHEET 20 DETAIL DM AND SECTION CUT EM-EM
FOR MISSING DIMENSIONS
APPLICABLE 4x

FORM CAD 10	WSFAL6	APPROVED BY	WALSHM	FORM 0000000000	LABEL NUMBER
DESIGNED BY	RUQLZY	REVISIONS	001		
CHECKED BY	RUQLSZ	DESIGNED BY	GIJRAOJ		
DATE	29 Aug 22	DATE	29 Aug 22		
TIME	MD	TIME	MD		
SCALE	1:10	SCALE	D		
THIRD ANGLE		THIRD ANGLE			
PROJECTION		PROJECTION			
DRAWN BY		KALWALS		DRAWN BY	
UPPER PORT PLUG STRUCTURE		UPPER PORT PLUG STRUCTURE		UPPER PORT PLUG STRUCTURE	
BOTTOM PLATE MACHININGS		BOTTOM PLATE MACHININGS		BOTTOM PLATE MACHININGS	
QUALITY CLASS		QC-1		QUALITY CLASS	
QC-1		QC-1		QC-1	
DOCUMENT TYPE		Part Drawing		DOCUMENT TYPE	
A1 55 U0 AP 04495007 07		A1 55 U0 AP 04495007 07		A1 55 U0 AP 04495007 07	

